



LOCAL

# THINGS TO DO

PORT ISABEL & SOUTH PADRE ISLAND



## PORT ISABEL LIGHTHOUSE

A historic lighthouse that was built in 1852 to guide ships through the Brazos Santiago Pass to Port Isabel, it is also on the National Register of Historic Places.

**421 E Queen Isabella Blvd, Port Isabel, TX**



## DOLPHIN DOCKS

Dolphin watching, bay fishing trips, fireworks cruises, scenic sunset cruises, marine ecology tours and more, this is located right down the road.

**510 E Queen Isabella Blvd, Port Isabel, TX**



## SEA TURTLE INC

Sea turtle rescue and rehabilitation facility, open to visitors to see the turtles in for rehabilitation, visit resident turtles, attend presentations, and more.

**6617 Padre Blvd, South Padre Island, TX**



## BEACH PARK AT ISLA BLANCA

A newly renovated water park for all ages, from kids pools and water slides, to endless surfing and a float-in bar, there is something for everyone.

**33261 State Park Rd 100, South Padre Island, TX**



## SAND SCULPTURE VILLAGE

An exclusive collection of large artistic sand sculptures, South Padre Island is home to some of the best sand for sculpting and building. These are sure to be some of the most unique, detailed sand sculptures you have ever seen.

**W Ling St, South Padre Island, TX**



## SPACEX

The launch pad, Starbase facilities and rocket garden are able to be seen well from the decks. There is a viewing scope provided to get a closer look. Please make sure to bring it inside when it is not in use. SpaceX is a 50-60 min drive if you'd like to visit the launch pad.

**52448/54298 Boca Chica Blvd, Brownsville, TX  
(Starbase/Launch Pad)**

# LOCAL THINGS TO DO

## PORT ISABEL & SOUTH PADRE ISLAND



### BIRDING AND NATURE CENTER

Bayfront boardwalks for birdwatching, and beyond, this beautiful space is also home to an alligator sanctuary. There are tours and educational opportunities as well.

**6801 Padre Blvd, South Padre Island, TX**



### GRAVITY PARK

Amusement park opened in 1993, go-karts, mini golf reverse bungee, & more.

**106 W Marlin St, South Padre Island, TX**



### ISLA BLANCA PARK

Vast motorhome campsite offering access to the beach, fishing areas, shops & restaurants.

**6617 Padre Blvd, South Padre Island, TX**



### SPI WELCOME SIGN

A newly re-opened water park for all ages, from kids pools and water slides, to endless surfing and a float-in bar, there is something for everyone.

**33261 State Park Rd 100, South Padre Island, TX**



### ARTURO GALVAN COASTAL PARK

With nearly 2,000 feet of shoreline along the Laguna Madre Bay offers beautiful views, wade fishing access, parking, restrooms, shaded picnic areas, grills, and a playground

**1801 2nd St, Port Isabel, TX**



### PORT ISABEL HISTORICAL MUSEUM

Exhibits & artifacts from the Mexican-American War until now, including an iconic 1906 fish mural.

**317 Railroad St, Port Isabel, TX**



# FOOD & DRINKS



## Hopper Haus

*418 E Queen Isabella Blvd, Port Isabel, TX*

Under 2 min from the swing bridge & open daily, serving great burgers, tacos, sandwiches, salads, seafood and more. Grab a craft beer and check out their spacious back patio and live music.

(956) 803-5991



## Café Karma

*5200 & 2500 Padre Blvd Suite 101, South Padre Island, TX*

A cozy spot with excellent drinks from coffee & tea, to lattes & frappes, an assortment of pastries, baked goods, and more.

Now with a second location, Karma Coffee and Books.

(956) 803-5991 & (956) 747-2568



## Café on The Beach

*3616 Gulf Blvd, South Padre Island, TX*

Nice breakfast options in the morning. They are open for lunch & dinner as well, and have outdoor seating overlooking the picturesque gulf side dunes and beach.

(956) 761-2703



## Mahi Nic

*33384 State Park Rd 100, South Padre Island, TX*

Serving great burgers, seafood, drinks and more. They have casual outdoor seating overlooking the marina with a great sunset view and close to Isla Blanca Park.

(956) 243-0297



## F&B

*3109 Padre Blvd, South Padre Island, TX*

Fantastic upscale food & drinks, with great atmosphere and service. The drinks are amazing, rotating menu is fantastic, and the dress code is island casual so feel free to dress up or down, either way you'll fit right in.

(956) 772-8114

# FOOD & DRINKS



## The Lighthouse Cafe

401 E Maxan St, Port Isabel, TX

Under 2 min from the swing bridge & open daily, serving great burgers, tacos, sandwiches, salads, seafood and more. Grab a craft beer and check out their spacious back patio and live music.

(956) 336-1794



## SPI Taco Trucks

5200 Padre Blvd Suite 101, South Padre Island, TX

Excellent drinks from coffee & tea to lattes & frappes, an assortment of pastries, baked goods, and a large variety of flavors of ice cream.

(956) 803-5991



## Josephine's Kitchen (PI & SPI)

3616 Gulf Blvd, South Padre Island, TX & 110 N Tarnava St, Port Isabel, TX 78578

Great breakfast options in the morning. They are open for lunch & dinner as well, and have seating overlooking the picturesque gulf side dunes and beach.

(956) 761-2703



## Vermillion Restaurant and Watering Hole

115 Paredes Line Rd, Brownsville, TX 78521

Local institution dating back to 1934 serving down-home American & Tex-Mex faves in a simple space. This unassuming location will surprise you with their nachos and fajitas!

(956) 542-9893



## Taqueria Ultimo Taco

938 North Expy, Brownsville, TX 78521

This unassuming eatery serves straightforward Mexican grub such as tacos, flautas & tostadas. Simple and delicious authentic tacos and mexican fare!

(956) 772-8114

# PLACES TO FISH

## Pirate's Landing Fishing Pier

110 North Garcia, Port Isabel, TX

The longest fishing Pier in Texas, and only a short trip away running next to the Queen Isabella Causeway, waterfront at the historic lighthouse

**Call:** (956) 943-7437

**Website:** [piratespier.com](http://piratespier.com)



## Ultimate Fishing Guides

2562 Gulf Blvd, South Padre Island, TX

Family friendly guided private bay fishing trips suitable for all levels of experience, birding, dolphin watching, fireworks cruises and sunset cruises

**Call:** (956) 346-0140

**Website:** [fishingsouthpadresisland.com](http://fishingsouthpadresisland.com)



## Always A Catch SPI Fishing

211 W Swordfish St, South Padre Island, TX

Captain Dave knows when and where the fish are biting and will bring your group to the spot with the best chances of catching speckled trout, redfish, snook, and black drum, from the Laguna Madre Bay to the Gulf of Mexico

**Call:** (956) 524-3002

**Website:** [spifishingtrips.com](http://spifishingtrips.com)



## Captain Murphy's Deep Sea Fishing

33256 State Park Rd 100, South Padre Island, TX

Deep sea and bay fishing, offering various tours including dolphin watches, eco-tours, sunset cruises, and Port of Brownsville nature tours, as well as special event cruises like SpaceX launches and New Years Eve fireworks cruises, the crew will also clean, filet and bag your catch for a small fee

**Call:** (956) 761-2764

**Website:** [islatours.com](http://islatours.com)



## Jetties and Shore Fishing

1 Padre Blvd, South Padre Island, TX & more

South Padre Island is a fantastic place to fish from shore, in the shallow flats, and to cast into deeper waters from jetties or piers, on the southern tip of SPI there are jetties that are popular for fishing, or for a walk along the beach to enjoy the view and the wide variety of birds



PORT ISABEL / SOUTH PADRE ISLAND

# NECESSITIES

## HEB

1679 TX-100, Port Isabel, TX

Supermarket offering groceries, beer & wine, plus a deli, pharmacy & florist, open 6am-11pm daily

Call: (956) 943-1171



## Walmart Supercenter

1401 TX-100, Port Isabel, TX

A very large department store with groceries, clothing and much more, open 6am-11pm daily

Call: (956) 943-1387

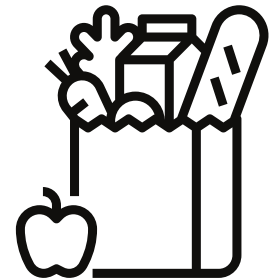


## Blue Marlin Supermarket

2912 Padre Blvd, South Padre Island, TX

South Padre Island's only grocery store, open 7:30am-10pm daily

Call: (956) 524-3002

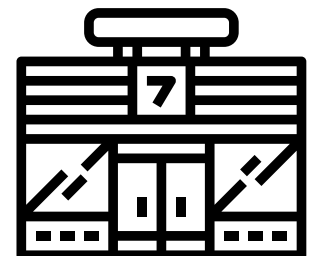


## 7-Eleven

102 E Queen Isabella Blvd, Port Isabel, TX

24/7 convenience store, located in Stripes

Call: (956) 943-5011



## Valero

102 E Queen Isabella, Port Isabel, TX

Nearest gas station, same establishment as Stripes / 7-Eleven

Call: (956) 943-5011

